



## ST. LOUIS SCHOOL

Circular No. 095 (25-26)

13<sup>th</sup> October, 2025

Dear Parents/ Guardians,

### **Re: Purchase of School Jersey**

We are delighted to announce the availability of the School Jersey. Designed by the Prefects' Association, with the calligraphy of our school's name and school motto by our former teacher Mr. Chan Bit Leung, the school jersey is a symbol of brotherhood and sense of belonging.

Price : HKD44  
Supplier : BUDDY  
Sample : Please refer to the attachment  
Size available : XS to XL; please refer to the attached size chart

Please note that the School Jersey is NOT part of the regular school uniform and the purchase is optional. However, students are welcome to wear the School Jersey instead of school uniform on the following occasions, namely the Swimming Gala, Sports Days and Sports Induction Days. Besides these occasions, they are encouraged to wear the jersey during activities such as ball games during lunch breaks and after school.

Please return the reply slip together with the payment (if applicable) to your son's/ charge's class teacher by 17<sup>th</sup> October (Friday), 2025. The payment can be made by cash or a cheque payable to "The IMC of St. Louis School". The jerseys are expected to be distributed in November. Further announcements regarding the collection will be made in due course.

Thank you for your support.

Yours faithfully,  
(Mr. LUI Yiu Sun)  
*for Principal*

Attachment (Purchase of School Jersey)

Sample

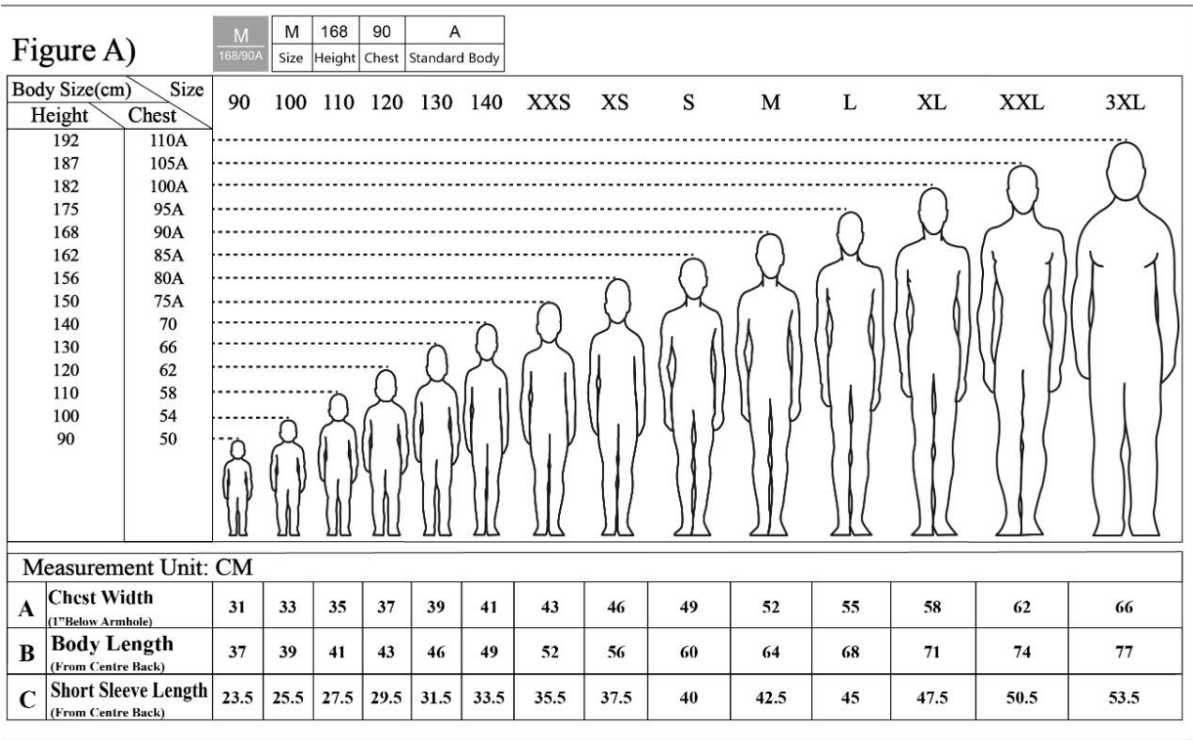
Navy Blue with white calligraphy



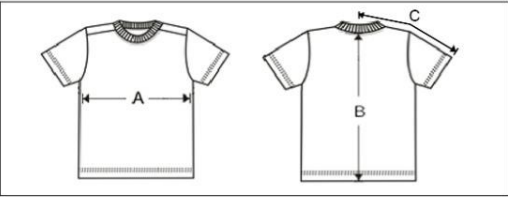
Size Chart

**BUDDY T-Shirt Size Reference 25**

DATE: Oct 29, 2024



**Figure B: Measurement Reference**



**How to find your own T-shirt?**

1. Get your suggested size in Figure A according to your stature.

**Reply slip**

Circular No. 095 (25-26)

**Re: Purchase of School Jersey**

Dear Principal,

My son/charge \_\_\_\_\_ (Name) of \_\_\_\_\_ (Class), No. \_\_\_\_\_,

^☐ would not like to purchase the school jersey.

^☐ would like to purchase the school jersey and the details are as follow:

Size	Quantity	Total (\$42@)
XS		
S		
M		
L		
XL		
Total Amount:	pcs	HKD

^Please tick one.

Signature of Parent/Guardian : \_\_\_\_\_

Name of Parent/Guardian : \_\_\_\_\_

Student's Mobile Number : \_\_\_\_\_

Emergency Contact Number : \_\_\_\_\_

Date : \_\_\_\_\_